

## Datasheet - MYL4 Rabbit Polyclonal Antibody

CAT.NO.: APA16229

### Key Features and Details

<b>Product</b>	MYL4 Rabbit Polyclonal Antibody
<b>Host</b>	Rabbit
<b>Clonality</b>	Polyclonal
<b>Reactivity</b>	Human, Mouse, Rat
<b>Applications</b>	WB
<b>Conjugation</b>	Unconjugated
<b>Brand</b>	AREX

### Background

Regulatory light chain of myosin. Does not bind calcium.

## Product Details

<b>Description</b>	Rabbit polyclonal antibody to MYL4
<b>Specificity</b>	Recognizes endogenous levels of MYL4 protein
<b>Antibody Type</b>	Primary antibody
<b>Immunogen</b>	Recombinant fusion protein of human MYL4. Exact sequence proprietary.
<b>Purification</b>	Immunogen affinity chromatography
<b>Molecular Weight</b>	Predicted: 21 kD; Observed: 22 kD
<b>Form / Buffer</b>	Liquid in 0.42% Potassium phosphate, 0.87% Sodium chloride, pH 7.3, 30% glycerol, 0.01% sodium azide
<b>Alternative Names</b>	MLC1; Myosin light chain 4; Myosin light chain 1 embryonic muscle/atrial isoform; Myosin light chain alkali GT-1 isoform
<b>Gene Symbol</b>	MYL4
<b>Entrez Gene</b>	4635 (Human)
<b>SwissProt</b>	P12829 (Human); P09541 (Mouse); P17209 (Rat)

### Application

To ensure optimal assay performance, AREX recommends conducting reagent titration tailored to each testing system for optimal detection results.

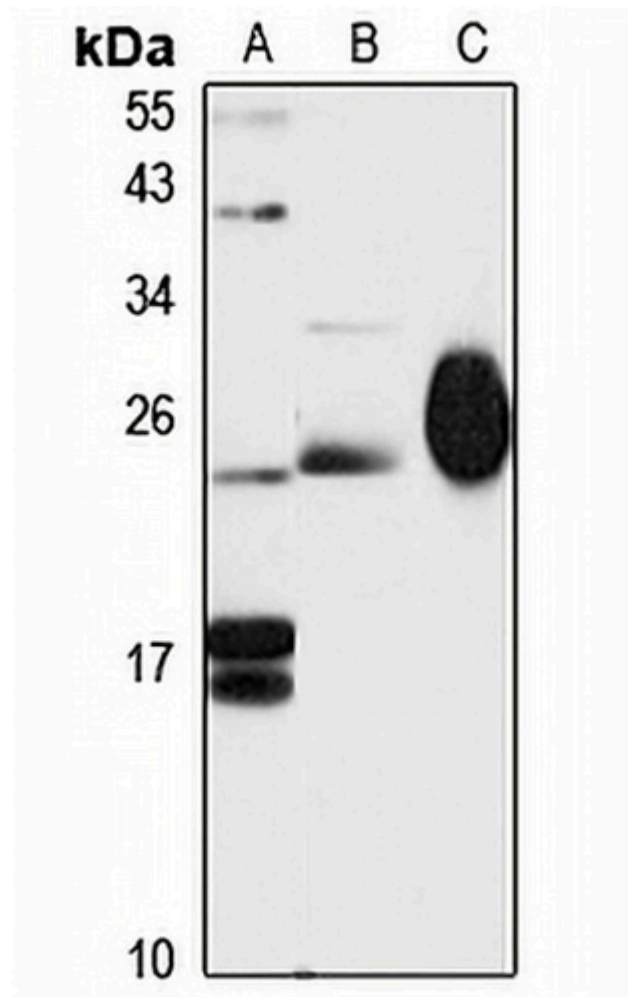
**WB:** 1:500 – 1:2000

\*Results are sample-specific. Please refer to your local assay conditions and test parameters for reference.

### Storage

Store at 4°C short term. For long term storage, store at -20°C, avoiding freeze/thaw cycles.

### Data



Western blot analysis of MYL4 expression in mouse lung (A), mouse testis (B), rat heart (C) whole cell lysates.

Predicted band size: 21 kD; Observed band size: 22 kD

