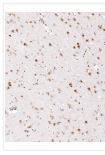
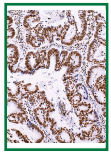
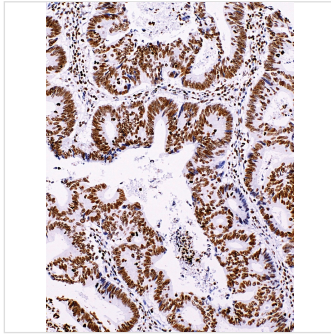


## INI-1 Mouse Monoclonal Antibody(ARM512)



### Key features and details

Target:INI-1

Clone ID:ARM512

Host Species:Mouse

Species Cross-reactivity:Human

Applications:IHC-P

Dilution:1:50-1:200

Clonality:Monoclonal

Storage:-20°C

Brand: **AREX**  
Biosciences

CAT.NO. : ARM6802

**RMB: 3500.00**

Size:

1mL

Trail, Bulk size or  
Custom requests  
Please contact us

\*产品价格可能会有所调整, 请以品牌方官网实时更新的价格为准, 以确保准确性。

## Product Details

### Background

Integrase interactor 1 (INI-1), also known as hSNF5, is an integral component of the hSWI/SNF (SWItch/Sucrose Non Fermentable) chromatin remodeling complex, which facilitates DNA-dependent cellular processes including transcription, replication, and repair. The INI-1 gene is often mutated or deleted in malignant rhabdoid tumour (MRT), a tumour which is potentially mimicked by medulloblastoma and supratentorial primitive neuroectodermal tumours (sPNETs). The morphology of MRTs can often present challenges in differential diagnosis, and INI-1 has shown to be useful in distinguishing between the three conditions as the majority of medulloblastomas and sPNETs are labeled by Anti-INI-1, while a lack of nuclear labeling by the same antibody is characteristic of MRT.

### Application

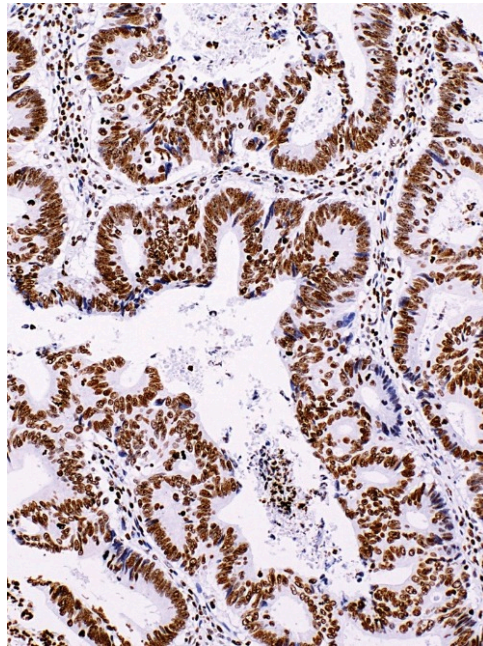
Application	Dilution Ratio
IHC	1:50 - 1:200

### Overview

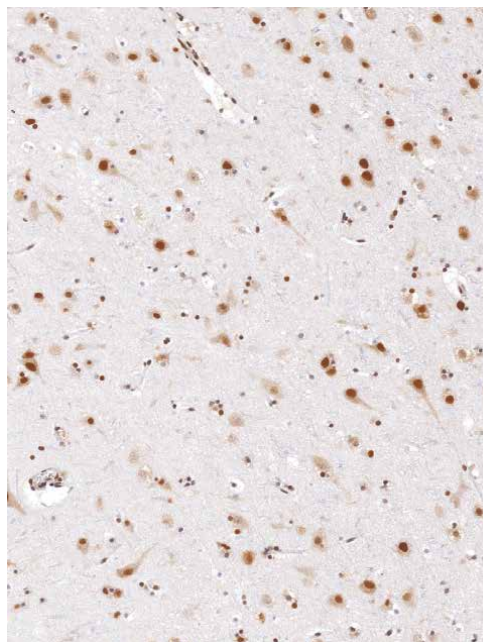
Molecular Weight	385
Chromosome Location	Chromosome: 22; NC_000022.10 (24129150..24176705). Location: 22q11.23; 22q11
OMIM	162091
3D Structure	ModBase 3D Structure for Q12824
Clonality	Monoclonal
Isotype	IgG2a
Host	Mouse
Species Reactivity	Human
Specificity	INI - 1

Purity/Purification	Purified
Form/Format	Tris Buffer, pH 7.3 - 7.7, with 1% BSA and <0.1% Sodium Azide
Immunogen	Recombinant Protein

## Data



Immunohistochemical staining of human breast carcinoma tissue sections using INI-1 Mouse Monoclonal Antibody (ARM512).



Immunohistochemical staining of human cerebral cortex tissue sections using INI-1 Mouse Monoclonal Antibody (ARM512).

## Storage

Store at 4°C short term. For long term storage, store at -20°C, avoiding freeze/thaw cycles.

## Research Use Only

For Research Use Only. Not for use in diagnostic procedures.